

**Blue Valley  
Community Action**  
**Annual Report**  
**2000-2001**

*Serving the People of Southeastern Nebraska  
and North Central Kansas.*

*1966-2002*

*December 2001*

# Table of Contents

Letter from the BVCA Board President.....	1
2000-2001 Board of Directors .....	1
Letter from the BVCA Executive Director.....	2
Management Team.....	2
Resources and Support.....	3-4
Revenue.....	3
Expenses .....	4
Those BVCA Has Helped.....	5-6
Our Mission Statement .....	5
The Promise of Community Action.....	5
The Seven Principles of Community Action .....	6
How BVCA Has Changed Lives .....	7-12
Housing Tenant Letter .....	7
Health Services .....	7
Family Development.....	8
Nutrition Services .....	8
Transportation Services .....	8
Homeless Services .....	8
Outreach Services .....	9
Emergency Services.....	9
Crisis Intervention Client Letter .....	9
Housing Services and Development.....	10
Youth Services.....	11
Children Services.....	11
Volunteer Opportunities.....	12
Blue Valley Community Action Sites.....	13
Acknowledgment .....	14



## Board of Directors 2000-2001

### Executive Committee

*Dwight Nichols, President*  
*Willis Ludke, Vice President*  
*Karen Elznic, Secretary*  
*Bonnie Schoenbeck, Treasurer*  
*James Klute, Planning*  
*Don Myers, Personnel*

### Additional Members

*George Scholz*  
*Anna Kinnison*  
*Evelyn Uphoff*  
*Albert Simacek*  
*Pat Lefever*  
*Daniel Hall*  
*Harlan Hagemeier*  
*David Swavely*  
*Len Hawkins*  
*Judy Doerr*  
*James Weichel*  
*Fern Shamburg*  
*Phyllis Watson*  
*Sally Ruggia-Haden*  
*Michael Simonsen*  
*Lavern Wimer*  
*Willis Luedke*  
*Larry Barrett*  
*Punky Reisdorff*  
*Ray Naber*  
*Velma Lutz*  
*Lucinda Johnson*  
*Lawrence Traudt*  
*Roberta Woolston*  
*Daryl Ream*  
*James Klute*  
*Bob Wolfe*  
*Arlene Blair*  
*Randy Givens*  
*Brock Elsen*

## *From the Board President...*

This has been an eventful year. Blue Valley Community Action has celebrated its 35<sup>th</sup> Anniversary. We began the year coming off the best year ever in 2000 and then there was the political controversy over the election, a change in the economy and then the attack of September 11. It isn't easy to say it was a good year. An eventful year will have to suffice. Blue Valley Community Action saw increased numbers of folks in economic trouble and higher demands on our emergency services such as food pantries, clothing rooms, utility shut-off assistance and shelter. Other agencies tell us they too are seeing higher numbers of needy, particularly in mental health and employment.

As we enter 2002, we see growth at BVCA, but sometimes our growth reflects the bad news in the economy. So we continue to help move our communities toward better opportunity for all residents. We offer a multitude of services coordinated to impact the success of the families we serve. We offer child development care from infants to school age. We offer youth alternatives to misguided directions. We offer families opportunities to move from homelessness to home ownership. We offer free health alternatives to many of those who can't keep up with rising health care costs, such as immunizations, breast and cervical cancer screening, telephone nurse triage, Kids Connection free insurance enrollments and respite options for those caring for loved ones. We help families control energy costs by providing weatherization to homes, which decreases our country's dependency on foreign oil and non-renewable energy sources. We also work hard with others in our communities to help unify our efforts to deal with issues specific to those communities, such as youth violence, housing development, coordinated one stop service centers and other local needs.

It is our hope that others will join with us to better the opportunity for all our residents and improve our rural economies. We depend on generous contributions and dedicated volunteers. We hope together, we can join something larger than ourselves, something that helps people and changes lives. We hope you will join the Community Action partnership.



*Richard Nation, Executive Director (left) and  
Dwight Nichols, BVCA Board President*

## *...From the Executive Director*

This is Blue Valley Community Action's report on its 35<sup>th</sup> year. It is a continuing story of the success of this organization. While facing tougher pressures, this anti-poverty agency has risen to the challenge of a faltering economy and of greater demand for its services. The events of September 11 have shown that all Americans, regardless of their national origin or ethnic background, can pull together to overcome great tragedy and severe challenges. This is not a new story. We all knew this. Americans have overcome adversity since the beginnings of our country.

We in Community Action see Americans struggling with adversity all the time. Even during the roaring 1990's, the economy was leaving some folks behind. Since the summer of 2001, with the economy officially in recession, and the sharp drop after 9-11, far more Americans are out of work. The farm economy is far from the days of \$3 corn and small towns continue to lose population as job opportunities leave the area. What is an organization dedicated to "opportunity for all" to do? We at Blue Valley Community Action build upon strengths.

The things that rural America has going for it are enormous. The spirit of the people, of all people—from ancestors of covered wagon travelers to new arrivals making a better life for their families, is a huge asset from which to work. Nebraskans have the highest percentage of two adult workers in a family of all states. It has the highest percentage of workers with two or more jobs. We have workers with high work ethics. We have generous neighbors with an inherent belief in fair play and the rule of law. And we have cleaner air than most cities. We can build on our strengths.

We at Blue Valley Community Action believe that we must not only work hard, but that we must diversify and be innovative. Rural areas must struggle even harder. The wide-ban-width Internet service that the country is coming to depend upon, and that could mean a revival of the rural economy, has not come to rural areas and market forces may never bring it. Rural communities may have to step up to this task, if they wish to see the declines in population halted. We welcome new arrivals for they permit economic expansion in areas of sparse population.

We also believe in personal responsibility. Blue Valley Community Action does not give handouts, as such. We believe that those in need must come forward and be responsible by finding the bargains at our clothing rooms and stores, that volunteering is a noble thing and those in need can give back through volunteering when financial donations are out of the question. We form partnerships with our clients—they do and we help.

Blue Valley Community Action also believes in the strength of families. Strong families make for strong communities. We try to help families where we can by providing such services as child care, making homes suitable for families and elderly and helping with respite services. We try to help change lives, where families want to change.

We try to live our mission. We hope you will join us through volunteering or contributing toward helping our less fortunate neighbors. And we hope you enjoy this Annual Report.

## **Management Team 2000-2001**

*Executive Director-Richard D. Nation*

*Comptroller-Robin Mayer*

*Human Resources-Loree Rix-Crouse*

*Blue Valley Crisis Intervention*

*Carmen Grummert, Director*

*Domestic Violence/Sexual Assault*

*Crisis Intervention*

*Public Information*

*Juvenile Diversion Program*

*AmeriCorps/NE Reads*

*Family & Community Services*

*Ardith Hoins, Director*

*Food Programs*

*Health Services*

*Family Development*

*Emergency Shelters/Services*

*Transit Services*

*Saline Eldercare*

*Foster Grandparents*

*County Coordinators and Centers*

*Homeless/Near –Homeless Assistance*

*Housing & Rural Development*

*Jerri Kerr, Director*

*Community Housing Development*

*Weatherization & Home Rehabilitation*

*Housing Rentals*

*Homeowner Assistance Services*

*Children & Youth Services*

*Kathryn Moleczyk, Director*

*Blue River Family Resource Center*

*Blue River Child Development*

*Head Start-Nebraska*

*Head Start-Kansas*

*Early Head Start*

*Full Day/Full Year*

# Blue Valley Community Action Resources & Support

## STATE OF NEBRASKA GRANTS:

AmeriCorp	\$31,166
CSFP (Commodity Distribution)	*\$83,689
WIC (Health & Nutrition)	\$138,139
NHAP (Homeless Assistance)	\$77,252
HIV/AIDS	\$3,464
Immunization	\$19,755
Sexual Assault	\$14,467
Domestic Violence	\$89,522
VOCA (Victims of Crime Assistance)	\$85,830
CSBG (Community Services)	\$268,265
Training Institute (Staff Development)	\$4,257
Child Care Food	\$93,950
Hispanic Healthcare	\$31,542
Juvenile Justice	\$31,863
SESAME	\$125,384
CHDO (Housing Development)	\$54,731
LB 144 (Homebuyer Programs)	\$5,305
ESGP (Emergency Shelter)	\$26,204
FEMA	\$5,529
DOE Weatherization	\$75,047
Child Abuse Prevention	\$9,577
Jefferson County Good Beginnings	\$10,963
LIEAP Weatherization	\$72,650
Every Woman Matters	\$90,782
Continuity (Child Education)	\$16,365
Homeowner Assistance	\$315,524
Respite	\$40,475
Early Childhood Initiative	\$19,839
Total	\$1,841,536

\*Value of Commodities Distributed: \$528,669

## STATE OF KANSAS GRANTS:

Food Programs	\$4,637
---------------	---------

## UNITED WAY SUPPORT:

Cornhusker United Way	\$3,513
Foster Grandparent United Way	\$3,142
York United Way	\$2,500
United Way of America	<u>\$19,070</u>
Total	\$28,225

## PRIVATE FOUNDATION SUPPORT:

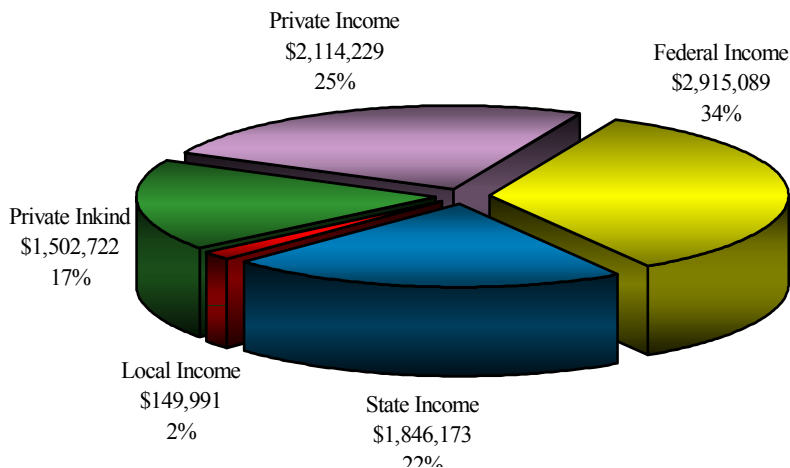
NE Children & Families Foundation	\$3,019
-----------------------------------	---------

## PRIVATE INVESTMENT REVENUES:

Corporate	\$242,159
Pickles	\$70,169
Administration Fees	\$43,951
Management Fees	\$70,696
Development Fees	\$84,579
Revolving Loan Programs	\$62,812
Blue River SPRING Grant	<u>\$24,205</u>
Total	\$598,571

## RENTAL INCOME:

Corporate Rents	\$11,530
Fillmore County Units	\$54,330
HOME Rents	\$15,918
Blue River Family Resource Center	\$24,033
Valley Heights	\$87,797
Diller Units	\$3,640
Dorchester Units	\$14,494
Osceola Units	<u>\$221</u>
Total	\$211,963



**BVCA's  
2000-2001  
Total Revenues:  
\$8,528,204**

# Blue Valley Community Action Resources & Support

## LOCAL GOVERNMENT SUPPORT:

Butler County	\$4,366
Fillmore County	\$3,287
Gage County	\$11,403
Jefferson County	\$4,161
Polk County	\$2,825
Saline County	\$6,883
Seward County	\$8,219
Thayer County	\$3,031
York County	\$7,243
City of Lincoln	\$25,089
Cities of Crete, Friend, & Wilber	\$6,175
Communities of Swanton, DeWitt, Tobias Western, & Dorchester	\$2,276
Total	\$84,958

## U.S. GOVERNMENT DIRECT GRANTS:

Head Start	\$1,518,621
Foster Grandparents	\$210,907
CATCH Network	\$129,975
Parent Information Center	\$429,799
HUD Supportive Housing	\$155,513
OCS Technology Grant	\$14,489
Rural Health Outreach	\$24,831
Early Head Start	\$430,954
Total	\$2,915,089

## PORT:

Pantries	\$16,919
Clothing Sales	\$135,491
In-Kind Contributions	\$1,502,722
Local Donations	\$42,461
Local County Projects	\$171,604
Total	\$1,869,197

## LOCAL FEES:

Blue River Child Development	\$320,901
Other Local Fees	\$3,000
Total	\$323,901

## OTHER REVENUES:

Fillmore Transit	\$63,616
Butler Transit	\$1,417
Total	\$65,033

## CONSTRUCTION/ASSET FUNDING:\*

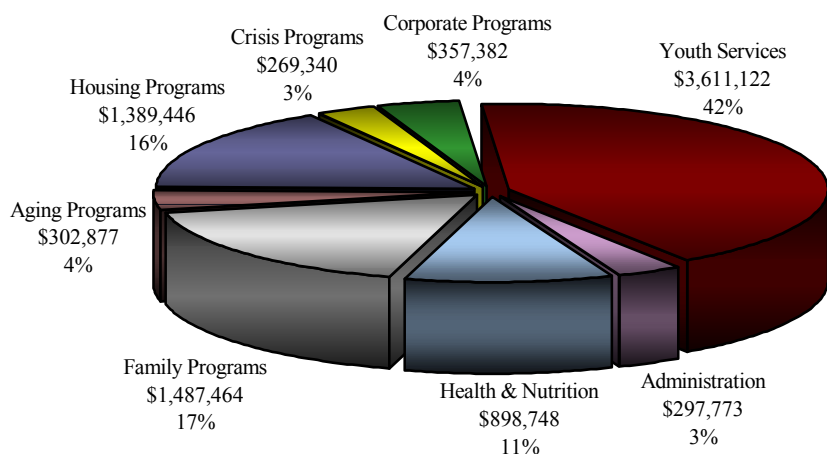
Prairie Wood	\$119,984
Diller 4-Plex	\$303,986
Sunset Crown	\$103,574
Other Construction	\$54,531
Total	\$582,075

\*BVCA is the general partner in six housing partnerships not included in these figures. See Page 10 for a listing.

## LOCAL PRIVATE SUP-

**BVCA increased cash reserves to \$290,000.**

**BVCA's  
2000-2001  
Total Expenses:  
\$8,614,152**



# Blue Valley Community Action's Mission Statement

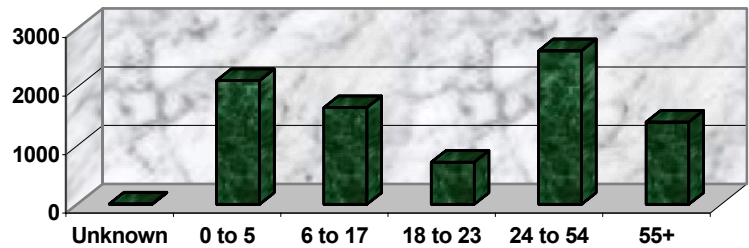
To build upon strengths by providing diverse and innovative opportunities to impact personal responsibility, family well-being, and community development.

**During 2000-2001 12,000 individuals were served by BVCA.**

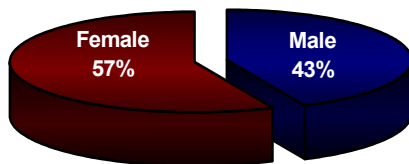
## Client Poverty

*Below 185% of Poverty: 89.5%*  
*Below 80% of Poverty: 43.6%*  
*Between 80% & 125% of Poverty: 33%*  
*Between 125% & 185% of Poverty: 12.9%*  
*Above 185% of Poverty: 3.8%*  
*Unknown Income Levels: 6.7%*

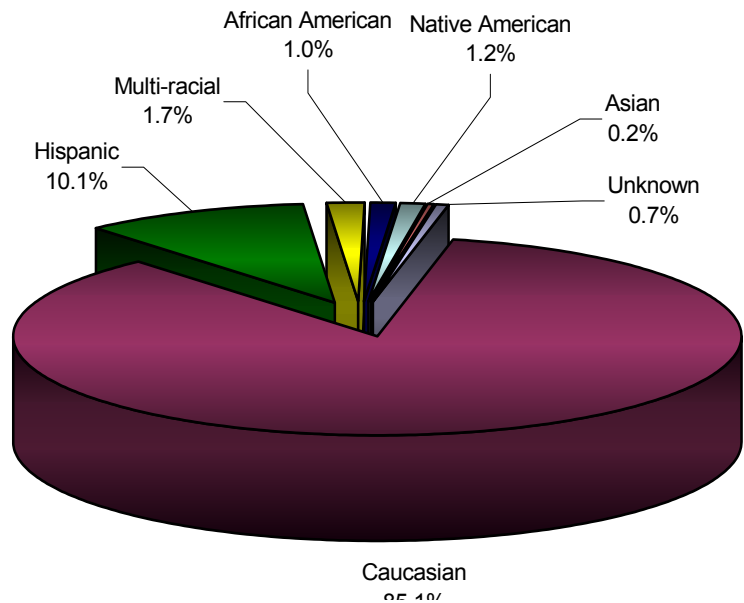
## Ages of Clients Served



## Gender Breakdown



## Ethnic Background



## Poverty vs. Welfare

*While almost 96% are below 185% of poverty, only 3.4% are on welfare (TANF/AFDC)*

## The Promise of Community Action

Community Action changes people's lives, embodies the spirit of hope, improves communities, and makes America a better place to live. We care about the entire community and we are dedicated to helping people help themselves and each other.

## Family Structure

### Marital Status:

**50.8% Never Married**  
**25.5% Married**  
**8.4% Widowed**  
**7.2% Divorced**  
**5.7% Living Together**  
**2.4% Separated**

### Parental Status:

**23.0% Two Parents w/ Children**  
**8.6% Single Parent w/ Children**  
**1.3% Non-custodial Parent**  
**2.4% About to Become a Parent**  
**18.2% Two Adults, No Children**  
**46.5% Has Never Been a Parent**

Average Family Size: 2.6 persons



## Education

**4.8% College Graduates**  
**6.7% High School Graduates and Some College**  
**26.2% High School Graduate**  
**16.7% Did Not Graduate High School**  
**21.8% Current K-12 Student**  
**23.8% Pre-School Age**

## Medical Insurance

---

**26.8% Kids Connection**

---

**15.5% Medicaid**

---

**9.0% Medicare**

---

**.1% Native American Health**

---

**23.3% Private Insurance**

---

**25.3% No Insurance**

---

## *The Seven Principles of Community Action*

**OPENING DOORS AND LEADING THE WAY** We provide access to the opportunities people need to improve their lives, to help themselves and each other.

**TURNING HOPE INTO REALITY** We identify the needs of the entire community, collaborate with others in the community and take action to improve life for everyone in the community.

**EMPATHIZING** Our staff and volunteers are from the community they serve.

**TREATING PEOPLE WITH RESPECT** We treat people the way we want to be treated.

**SAYING "YES"** If we do not provide the needed service, we will link you to those who do.

**GIVING A VOICE TO THE POOR** Through our advocacy, we seek to make society more flexible and responsive to the needs of the poor.

**MIRRORING THE DIVERSITY OF OUR COMMUNITIES** Our local boards include low-income people, local public officials, business and community groups.



# Helping People . . . Changing Lives

## A BVCA TEENAGE TENANT WRITES...

*To Whom It May Concern:*

*Have you ever sat down and wondered where you were going to go at the end of the month when your rent was due and you knew you wouldn't be able to pay it? Well, things weren't quite that bad for us, but I'm sure for some people that live in the Blue Valley Community Action service area that is the case.*

*My dad is a single parent of two and was recently unemployed due to an injury that left him with no source of income. We had no where to go until we were recommended to Blue Valley Community Action. They offered us all the help we had been needing, worked around our problems and actually gave us the benefit of the doubt instead of worrying about what was best for them. They also give you choices...*

*...that is the difference living here, these people are so caring.*

*"If it were not for the educational materials and help of your program, I feel this would have ended tragically."*

## HEALTH SERVICES

BVCA operates WIC (Women, Infants and Children), EWM (Every Woman Matters), Immunizations, the many CATCH II programs, and certain screenings.

- \* Nurse Triage Calls: 156 (Oct 00-Sept 01).
- \* 158 children were enrolled in Kids Connection.
- \* 488 individuals received Nurse Case Management.
- \* 1,455 women and children were examined in the WIC program.
- \* Immunizations were given to 4,583 kids for a grand total of 8,853 shots.
- \* Diabetes was found in 22 persons completing our survey.
- \* EPSDT Reminders (health checks): 870 families.
- \* 1,511 persons enrolled in Medicaid are receiving CATCH services.
- \* 347 Head Start & Early Head Start children received dental screenings.
- \* 206 families without a family physician were found medical homes.
- \* EWM (breast cancer awareness) applications: 354; 92 women enrolled in EWM.
- \* 180 classes were given by BVCA's Trainer in Adult & Child CPR, First Aide, and AED (Defibrillator).



# Helping People . . . Changing Lives

## FAMILY DEVELOPMENT

Twenty-six families in BVCA's family development projects worked to initiate positive changes in their lives. Both Project FIRST (dealing with homeless) and Project FOCUS (for families trying to make specific, major life direction changes) use the family development process.

During the past year, the Blue River Family Resource Center provided a wide variety of services in the Crete area. Programs included education for children and adults, English as a Second Language classes, Migrant Education for both children and adults, computer literacy training and public computer access, Health and Wellness programs, Hispanic Healthcare Program, community education, parenting education, emergency assistance, mental health and family strengthening programs. The total number of people who utilized a service offered from the BRFRC was 6,489.

*"They assisted us in getting everything we needed."*



*"When we put forth the effort with a family and see someone succeed, it makes us feel good." -BVCA staff comment*

## NUTRITION SERVICES

- \* Head Start provided 37,166 meals and 1,265 snacks to children.
- \* Commodity Supplemental Food Distribution: 1,071 families per month.
- \* 63,996 days of food were provided from food pantries.
- \* Pantry users in 2001 (10/00-9/01): 2,135 families.
- \* Volunteer hours at commodities clinics: 1,598 hours.
- \* Value of volunteers at commodity clinics: \$8,230.
- \* Blue River Family Resource Center provided 22,336 meals and 12,422 snacks to children.



*"Without this program, my family would still be struggling..."*

## TRANSPORTATION SERVICES

BVCA operates the Fillmore County Rural Transit Service. Rides are available, for a small fee, to the general public, with elderly and handicapped residents given priority. Last year, 5,227 trips were made for 142 passengers.



*"I don't know what I'd do without my ride."*

## HOMELESS SERVICES

- \* Homeless Prevention: 347 families helped with rent and/or utilities.
- \* Shelter nights provided: 1,009.
- \* Transitioned to Permanent Housing: 109 families.
- \* Meals provided: 1,898.
- \* Provided clothing &/or transportation to 99 individuals.

*"Look where I was, look where I am now!"*