

Blue Valley Community
Action Partnership

Annual Report
2002-2003

*Serving the People of Southeastern Nebraska
and North Central Kansas.*

1966-2004

Table of Contents

Letter from the BVCA Partnership Board President	1
2002-2003 Board of Directors.....	1
Letter from the BVCA Partnership Executive Director.....	2
Management Team	2
Resources and Support	3-4
Revenues	3
Expenses.....	4
Client Data.....	5-6
Our Mission Statement	5
The Promise of Community Action	5
The Seven Principles of Community Action.....	6
How BVCA Has Changed Lives.....	7-12
Health Services	7
Nutrition Services.....	7
Family Development	8
Outreach Services	8
Emergency Services	8
Homeless Services.....	8
Children Services	9-10
Housing Services and Development.....	11
Youth Services	12
Volunteer Opportunities	12
Transportation Services	12
Blue Valley Community Action Partnership Sites.....	13
Acknowledgment.....	14



Helping People...Changing Lives

Board of Directors 2002-2003

Executive Committee

Willis Luedke, President
Velma Lutz, Vice President
Karen Elznic, Secretary
Albert Simacek, Treasurer
James Klute, Planning
Fern Shamburg, Legislative
Larry Barrett, Personnel

The Members...

Public Sector Representatives

George Scholz, Butler County
Albert Simacek, Fillmore County
Harlan Hagemeyer, Gage County
David Swavely, Gage County
Tony Likens, Jefferson County
Michael Simonsen, Polk County
Willis Luedke, Saline County
Ray Naber, Seward County
Lawrence Traudt, Thayer County
James Klute, York County
Bob Wolfe, York County

Private Sector Representatives

Don Naiberk, Butler County
Shirley Hall, Fillmore County
Leo Prall, Gage County
Fern Shamburg, Jefferson County
Nella Gene Clinefilter, Jefferson County
Don Schneberger, Polk County
Wayne Nestor, Polk County
Larry Barrett, Saline County
John Walton, Thayer County
Kenny Vieselmeyer, Thayer County
Randy Givens, York County

Low-Income Sector Representatives

Anna Kinnison, Butler County
Evelyn Uphoff, Butler County
Daniel Hall, Fillmore County
Karen Elznic, Fillmore County
Len Hawkins, Gage County
Judy Doerr, Gage County
Roger Rupp, Jefferson County
Joyce Knudson, Polk County
Bonnie Schoenbeck, Saline County
Punky Reisdorff, Saline County
Velma Lutz, Seward County
Lucinda Johnson, Seward County
Daryl Ream, Thayer County
Roberta Woolston, Thayer County
Rita Critel, York County
April Ward, York County

Petition Ex-Officio Representatives

Lee Carr, Head Start Policy Council
Cliff Bailey, Head Start Policy Council
Michaela Krupicka, Youth Empowerment Council

From the Board President...

As the president of the governing board of Blue Valley Community Action Partnership, I have had the opportunity to oversee the growth of an organization that has been helping the area for thirty-eight years. This past year we saw the expansion of the Operations Offices in Fairbury, sixteen new homes in Crete and served almost 14,000 residents. In addition, we saw a rededication to the principles that have made this organization successful. Partnerships have always been what Blue Valley Community Action has been about and with our new name, we better reflect what we are: community partnerships taking action to make the area a better place for all to live.

BVCA Partnership's Board consists of low-income residents, elected by their peers; elected county board members selected by each county government; and private sector interests from religious representatives and civic organizations to business and industry leaders. This unique diversity of governing board members has allowed for thorough consideration when critical decisions are agreed to on the large variety of projects the organization undertakes.

Projects that are on the 2004 agenda include development of facilities in York, both client housing and an office, a center for children and youth programs, and remodeling the youth center in Fairbury. These are some of the building projects. The organization continues to expand its programming. The new regional home rehabilitation project and expansion of our Foster Grandparent program will lead to expanded opportunities for area residents.

As times get tough for everyone, expanded opportunities for those on the edge are important safety measures for our society and for vulnerable populations. We can always use your help. As we often say, Blue Valley Community Action Partnership does not do it all alone. Without the support and assistance of our neighbors and friends, within our multi-county service area, many of our efforts would not be successful. Our volunteers number into the thousands and we very much appreciate each and every one of them. If you have not been part of our efforts, or if you haven't done so recently and wish to join us in our partnership to help people and change lives, please contact your local Blue Valley Community Action Partnership office or call

the main office. If you want to know more about us please contact us through our website at www.bvca.net, contact our office in your area, call the main office or read on in this annual report covering our 37th year.



Richard Nation, Executive Director (left)
and Willis Luedke, Board President (right).

... *From the Executive Director*

As we enter our 38th year of serving our less fortunate neighbors, we reflect on the past year's accomplishments and challenges.

The economy has not been what most would have hoped. Challenges still exist with global changes in trade and outsourcing jobs, not to mention diseases that plague our farm-based economy. Rural migration continues to undercut the tax base in many rural counties. Reduced state and federal resources to address even more serious needs than were seen in the recent past further complicate our efforts to help our families and communities thrive. Private donations to our efforts have dropped slightly as individuals struggle to make ends meet. State cuts in programs often impact those at the lower end of the economic ladder more immediately. The feelings of progress seem to have been lost. So, yes Virginia, there are challenges.

Even so, Blue Valley Community Action Partnership had many successful accomplishments during 2003. Our efforts have given hope to many who may otherwise have felt the full impact of the downturn in the economy of the state. We have provided a first time opportunity for home ownership for eight families. Twenty-one families have moved from homelessness to permanent housing. Homes of 76 families were either rehabilitated or weatherized for safety and comfort as well as to reduce home operating costs.

The adage, "helping people, changing lives" begins to really mean something when we realize the numbers above are often folks we know, our neighbors both long term and new. When a person who has struggled with multiple issues related to poverty tells you, "Please know if ever in your life you made a big difference, you made it for my children," you know the good the organization does and the dedication of many volunteers and staff seems more real than any great listing of numerical accomplishments.

Blue Valley Community Action Partnership itself saw many advances in 2003. The expansion of the operations office is now complete and awaits spring weather for a ribbon cutting. The organization increased our assets and subsidiary holdings. While our overall revenues were down around four percent, its long-term revenues were up.

Our volunteers continue to be the strength of our organization. We need and depend on their support and we thank them.

The contents of this Blue Valley Community Action Partnership Annual Report covering the 2003 Fiscal Year (October 1, 2002-September 30, 2003) speak better than I can of the year's accomplishments. We encourage you to read on.

**Management Team
2002-2003**

Executive Director/CEO
Richard D. Nation

Chief Financial Officer
Robin Mayer

Human Resources
Loree Rix-Crouse

Research & Planning
Jamie Swartz

Blue Valley Crisis Intervention
Carmen Grummert, Director

Domestic Violence/Sexual Assault
Crisis Intervention
Public Information
Juvenile Services/Diversion Programs
AmeriCorps

Family & Community Services
Ardith Hoins, Director

Food Programs
Family Development
Emergency Shelters/Services
Transit Services
Saline Eldercare
Foster Grandparents
County BVCA Partnership Centers
Homeless/Near-Homeless Assistance

Health Services
Janie Fralin, Director

Women, Infants & Children
Immunizations
Hispanic Health Services
Every Woman Matters
Community Access to Coordinated Healthcare
Respite
Maternal Child Health

Housing & Rural Development
Jerri Kerr, Director

Community Housing Development
Weatherization & Home Rehabilitation
Housing Rentals
Homeowner Assistance Services

Children & Youth Services
Kathryn Molczyk, Director

Blue River Family Resource Center
Blue River Child Development
Head Start
Early Head Start

Helping People...Changing Lives

RESOURCES AND SUPPORT

STATE OF NEBRASKA GRANTS:

NEBHands	\$4,000
AmeriCorps	\$101,267
CSFP (Commodity Distribution)	*\$84,224
WIC (Health & Nutrition)	**\$214,304
NHAP (Homeless Assistance)	\$91,060
Maternal Health	\$67,362
Immunization	\$30,826
Sexual Assault	\$20,320
Domestic Violence	\$108,484
VOCA (Victims of Crime Assistance)	\$98,447
CSBG (Community Services)	\$283,748
EBT/VITA	\$5,974
Child Care Food	\$98,368
Hispanic Healthcare	\$40,917
Minority Healthcare	\$37,241
Juvenile Justice	\$25,125
SESAME	\$135,709
CHDO (Housing Development)	\$166,427
Assistive Technology	\$28,296
ESGP (Emergency Shelter)	\$26,523
DOE Weatherization	\$144,663
LIEAP Weatherization	\$95,934
Parenting Education	\$711
Family Preservation	\$2,234
Every Woman Matters	\$136,230
Playground/Partnership	\$3,671
Homeownership Assistance	\$67,887
Lead Screening	\$5,316
HHSS CATCH	162,833
Early Childhood Initiative	\$37,886
Total	\$2,325,987

*Value of Commodities Distributed: \$223,059

**Value of WIC Vouchers Awarded: \$360,445

STATE OF KANSAS GRANTS:

Food Programs	\$8,147
---------------	---------

UNITED WAY SUPPORT:

Cornhusker United Way	\$5,200
Gage County United Way	\$4,283
United Way of America	<u>\$12,164</u>
Total	\$21,647

PRIVATE FOUNDATION SUPPORT:

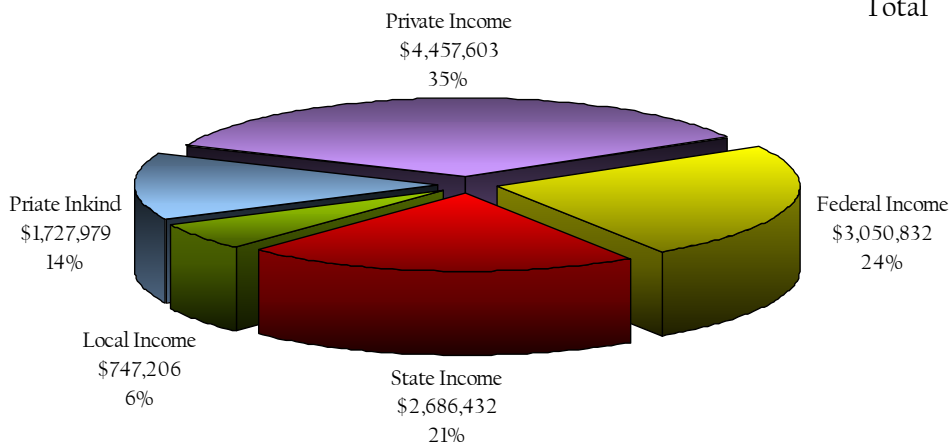
NE Children & Families Foundation	\$5,304
-----------------------------------	---------

PRIVATE INVESTMENT REVENUES:

Corporate	\$219,990
CATCH	\$17,165
CATCH Breastfeeding	\$21,112
Child Care Mini-Grants	\$2,045
Tax Credits	\$1,330
Pickle Cards	\$49,271
Administration Fees	\$13,455
Management Fees	\$77,589
Development Fees	\$1,342
Revolving Loan Programs	\$44,829
Scholarship	\$3,360
Self-Insurance Funds	<u>\$579,544</u>
Total	\$1,031,032

RENTAL INCOME:

Eagle Apartments	\$14,493
Diller Units	\$20,205
Osceola Units	\$28,352
Fillmore County Units	\$96,305
Dorchester Units	\$15,835
HOME Rents	\$13,350
Blue River Family Resource Center	\$30,944
Valley Heights I & II	\$166,395
Corporate Rents	<u>\$142,440</u>
Total	\$528,319



**BVCA's
2002-2003
Total Revenues:
\$12,670,052**

RESOURCES AND SUPPORT

LOCAL GOVERNMENT SUPPORT:

Butler County	\$4,515
Fillmore County	\$3,399
Gage County	\$11,500
Jefferson County	\$4,302
Polk County	\$2,921
Saline County	\$9,234
Seward County	\$8,498
Thayer County	\$3,134
York County	\$7,489
City of Lincoln	\$25,415
Saline Eldercare	\$38,745
Cities of Crete, Friend, & Wilber and the Communities of Swanton, DeWitt, Tobias, Western, & Dorchester	\$9,111
Jefferson County Good Beginnings	\$2,190
Reimbursement	\$16,753
Home Office Expansion Bond	<u>\$600,000</u>
Total	\$747,206

U.S. GOVERNMENT DIRECT GRANTS:

Head Start	\$1,909,606
Foster Grandparents	\$228,304
HUD Supportive Housing	\$168,567
Early Head Start	<u>\$521,296</u>
Total	\$2,827,773

LOCAL FEES:

Blue River Child Development	\$351,088
Project First Escrow	\$7,451
BV Technical Services Fees	\$15,448
York Childcare Fees	<u>\$6,494</u>
Total	\$380,481

LOCAL PRIVATE SUPPORT:

Pantries	\$23,828
Clothing Sales	\$144,998
Inkind Contributions	\$1,727,979
Local Donations	\$14,087
Local County Projects	\$73,260
Grain Lift (CAP of Mid NE)	<u>\$410</u>
Total	\$1,984,562

OTHER REVENUES:

Respite (SESAME)	\$74,511
Fillmore Transit	\$69,510
Jeff Center	<u>\$4,968</u>
Total	\$148,989

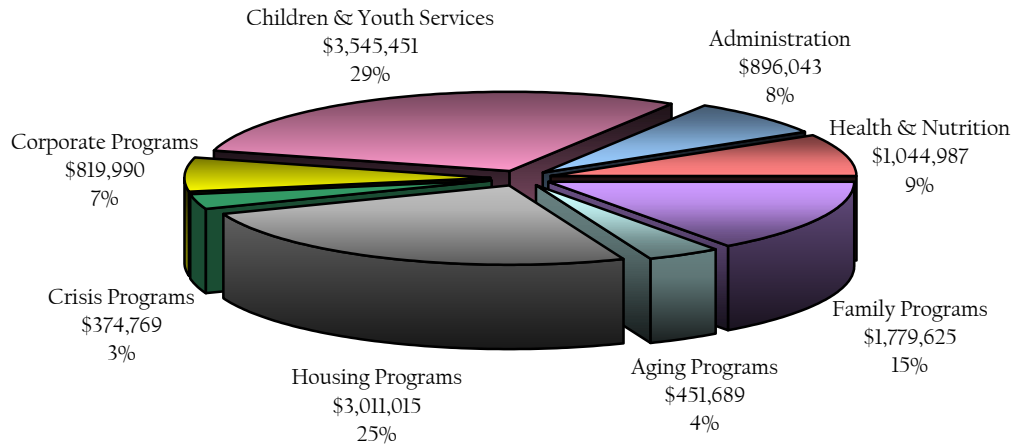
CONSTRUCTION/ASSET FUNDING:*

Valley Heights II	\$81,433
Prairie Woods	\$11,210
Bar-None	\$80,176
Blue Terrace CROWN	\$1,622,824
Fairmont/Exeter	<u>\$281,457</u>
Total	\$2,077,100

* BVCA is the general partner in eight housing partnerships not included in these figures. See Page II for a listing.

Note: Grants are identified by entity awarding them to BVCA Partnership.

**BVCA's
2002-2003
Total Expenses:
\$11,923,569**



Helping People... Changing Lives

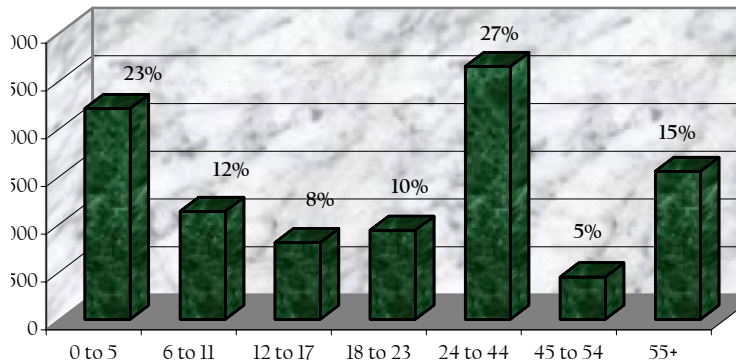
Helping People...Changing Lives

BVCA PARTNERSHIP'S MISSION STATEMENT

To build upon strengths by providing diverse and innovative opportunities to impact personal responsibility, family well-being, and community development.

During 2002-2003 13,662 individuals were served by BVCA Partnership.

Ages of Clients Served

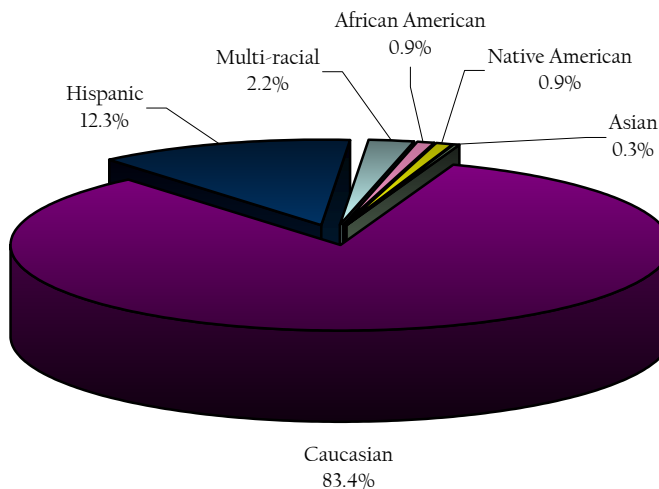


Poverty vs. Welfare

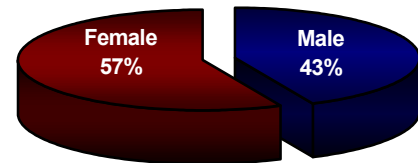
While more than 95.5% are below 185% of poverty, only 1.6% are on welfare (TANF/AFDC)*

** of those reporting income levels*

Ethnic Background



Gender Breakdown



Client Poverty*

Below 185% of Poverty: 96.5%

Below 80% of Poverty: 57.9%

Between 80% & 125% of Poverty: 27.5%

Between 125% & 185% of Poverty: 11.1%

Above 185% of Poverty: 3.5%

** of those reporting income levels*

THE PROMISE OF COMMUNITY ACTION

Community Action changes people's lives, embodies the spirit of hope, improves communities, and makes America a better place to live. We care about the entire community and we are dedicated to helping people help themselves and each other.

Family Structure

Marital Status:

- 25% Married**
- 51% Never Married**
- 7% Widowed**
- 8% Divorced**
- 7% Living Together**
- 2% Separated**

Parental Status:

- 22% Two Parents**
- 8% Single Parent**
- 1% Non-custodial Parent**
- 3% About to Become a Parent**
- 19% Adults, No Children**
- 47% Not of Parenting Age**

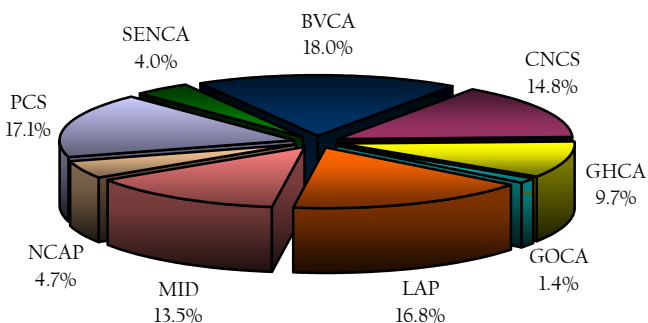
Average Family Size: 2.6 persons



Education

- 5% College Graduates**
- 8% High School Graduates and Some College**
- 27% High School Graduate**
- 15% Non-graduating Adults**
- 22% Current K-12 Student**
- 23% Pre-School Age**

Total Economic Impact of CAAs



BVCA: \$12,739,728	CNCS: \$10,435,223	GHCA: \$6,860,061
GOCA: \$1,008,534	LAP: \$11,876,058	MID: \$9,568,465
NCAP: \$3,334,053	PCS: \$12,088,474	SENCA: \$2,828,943

In total, CAAs were responsible for bringing in \$70,739,539 to their local economies. On average, CAAs leverage their CSBG dollars 16:1 with Federal, State and local funds.

Figures courtesy of Community Action of Nebraska.

THE SEVEN PRINCIPLES OF COMMUNITY ACTION

OPENING DOORS AND LEADING THE WAY We provide access to the opportunities people need to improve their lives, to help themselves and each other.

TURNING HOPE INTO REALITY We identify the needs of the entire community, collaborate with others in the community and take action to improve life for everyone in the community.

EMPATHIZING Our staff and volunteers are from the community they serve.

TREATING PEOPLE WITH RESPECT We treat people the way we want to be treated.

SAYING "YES" If we do not provide the needed service, we will link you to those who do.

GIVING A VOICE TO THE POOR Through our advocacy, we seek to make society more flexible and responsive to the needs of the poor.

MIRRORING THE DIVERSITY OF OUR COMMUNITIES Our local boards include low-income people, local public officials, business and community groups.

Helping People...Changing Lives

Helping People...Changing Lives

HEALTH SERVICES

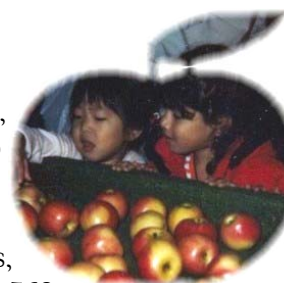
BVCA Partnership operates WIC (Women, Infants and Children), EWM (Every Woman Matters), Immunizations, the many CATCH II programs and certain screenings.

- * 340 Nurse Triage Calls.
- * 348 individuals were assisted with Respite Services.
- * 74 children were enrolled in Kids Connection.
- * 499 individuals received Nurse Case Management.
- * 1,612 women and children were examined in the WIC program.
- * Immunizations were given to 2,259 children for a grand total of 6,065 shots, 7.4%, of which, were given to children in school.
- * Diabetes was found in an additional 20 individuals completing our survey.
- * EPSDT Reminders (health checks) were given to 533 families.
- * 1,147 persons enrolled in Medicaid are receiving CATCH services, which is a 53% increase over last year.
- * 146 individuals without a family physician were found medical homes.
- * EWM applications (breast cancer awareness) were completed by 656 women, which is a 209% increase over last year.
- * 90 women were enrolled in Every Woman Matters (assisted with treatment costs), which was a 70% increase over last year.
- * 756 individuals received PHONE (Public Health Outreach, Nursing and Education) follow-up calls.



NUTRITION SERVICES

- * Head Start provided 48,428 meals and 810 snacks to children.
- * Blue River Family Resource Center provided 28,206 meals, which is a 19% increase from last year, and 12,217 snacks to children.
- * 3,762 meals were provided to domestic abuse victims.
- * 3,367 individuals/1,174 households benefited from food pantries, which is a 57% increase over last year's totals. A total of 79,568 days of food were provided.



- * Commodity Supplemental Food Distribution (CSFP) enrolled 1,504 individuals. (1,138 elderly and 366 women and children)
- * Volunteer hours at commodities clinics totaled 1,469.5 hours.
- * Value of volunteers at commodity clinics totaled \$9,037.



FAMILY DEVELOPMENT

Thirty-one families in BVCA Partnership's family development projects worked to initiate positive changes in their lives. Both Project FIRST (dealing with homeless) and Project FOCUS (for families trying to make specific, major life direction changes) use the family development process.

During the past year, the Blue River Family Center provided a wide variety of services in the Crete area. Programs included education for children and adults, English as a Second Language classes, Migrant Education for both children and adults, computer literacy training, Health and Wellness programs, Hispanic Healthcare Program, community education, emergency assistance, mental health and family strengthening programs. Families have been given Parenting Education classes and at-home courses. An e-mail service for parenting support and a resource library are now available for parents, foster parents and childcare providers.



OUTREACH SERVICES

BVCA Partnership provides outreach services to families in need. These services include family development case management, home visitation, education, information and referrals.

Family Development. 74% of enrolled families have either increased their incomes or are continuing in the program.

Referral services were provided to 7,563 individuals, which is up 99% from last year.

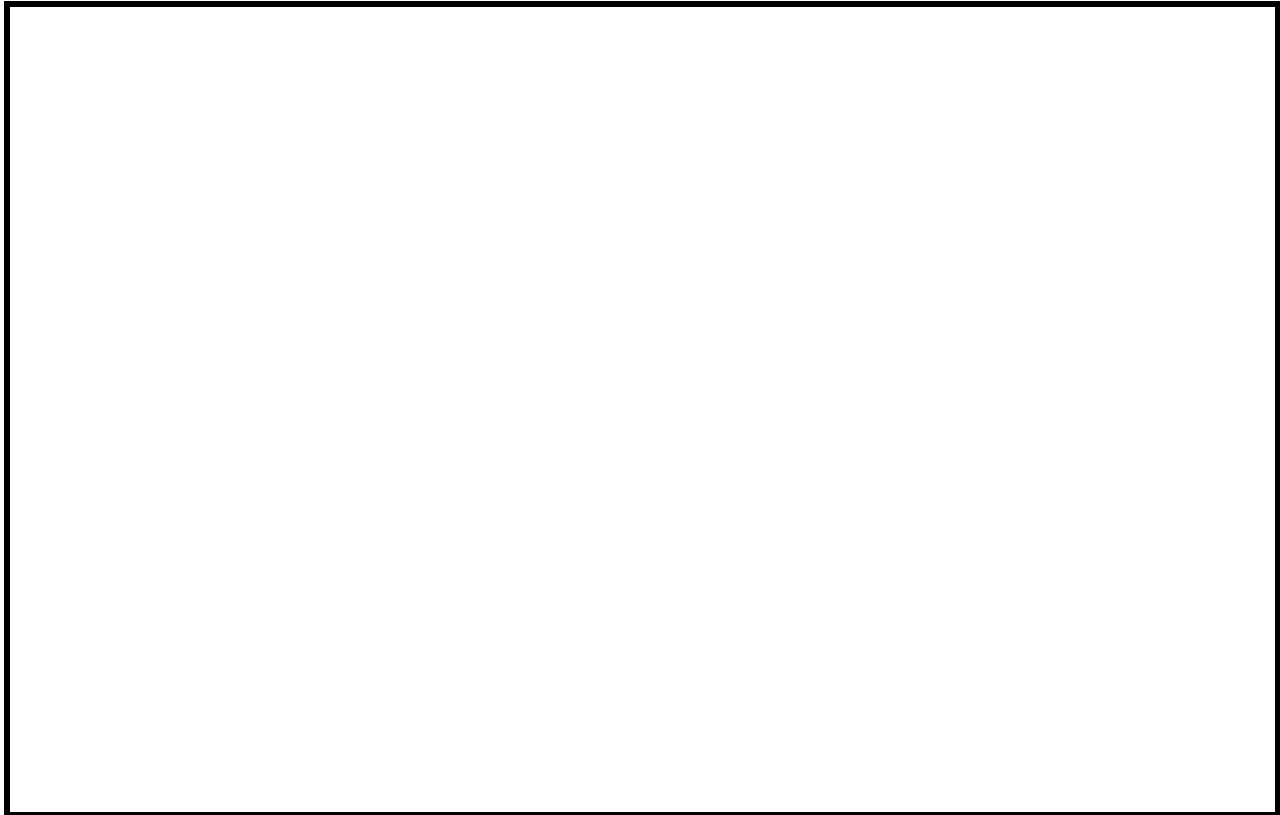
EMERGENCY SERVICES



- * Value of contributions of food, clothing and other goods totaled \$1,012,395.
- * 1,572 calls were received on the Domestic Abuse Crisis Line.
- * 1,276 shelter beds were provided for abuse victims.
- * 53 clients participated in domestic abuse case management.
- * 89 Crisis Intervention Information Presentations were given.
- * Domestic Abuse Awareness presentations were given at 31 schools.
- * 4,207 individuals attended presentations on Domestic Abuse and Sexual Assault.

HOMELESS SERVICES

- * Homeless Prevention: 296 families were helped with rent and/or utilities.
- * 21 families participated in Project FIRST (transitioning homeless to permanent housing).
- * 89 households (229 individuals) were provided safe lodging, food, transportation, counseling, medical and legal referrals along with case management options for a safe future.
- * Provided clothing to 90 individuals.
- * 130 individuals were sheltered for a total of 426 shelter nights.



1,361 family members were served by Head Start and Early Head Start.

Head Start Controversies:

Several issues have arisen this past year regarding Head Start. So we thought we'd look at how our program rates in these regards. See below:

*Enrollment. Head Start: full, 249 authorized, 307 enrolled. Early Head Start: full, 40 authorized, 65 enrolled.

*Waiting List. Head Start: First day of classes—82 or 33% of enrollment. Last day of classes—128 or 51% of enrollment. Early Head Start: First day of classes—28 or 70% of enrollment. Last day of classes—37 or 93% of enrollment. The goal is to have a waiting list that is at least 1/2 of enrollment.

*Teacher Credentials. Head Start: 7 of 13 teachers possess degrees or 54%. Early Head Start: 3 of 5 workers possess degrees or 60%. 50% are required to have degrees.



The Blue River Child Development Program



BRCDP serves families with infants, toddlers, preschoolers and school-aged children with a wide range of child development and family services. BRCDP served 233 children.

Blue River Child Development Program is open 70.5 hours per week to accommodate the needs of working parents.



Also offered is training to daycare home providers and other childcare centers via a variety of training venues, including three BVCA Partnership satellite locations within the area. Training includes topics such as Building Teacher Assets, Heads Up Reading, Winning Teams, Guiding Behaviors, Developmental Continuum and Building Teacher Skills in Child Assessment.